

# The Elements of Music

GENERAL MUSIC CLASS

UNIT 3

**Beat- steady pulse,  
a unit of  
measurement in Music**

**Tempo – the speed of  
the beat**

**Words that tells us the  
tempo:**

**Allegro – Fast**

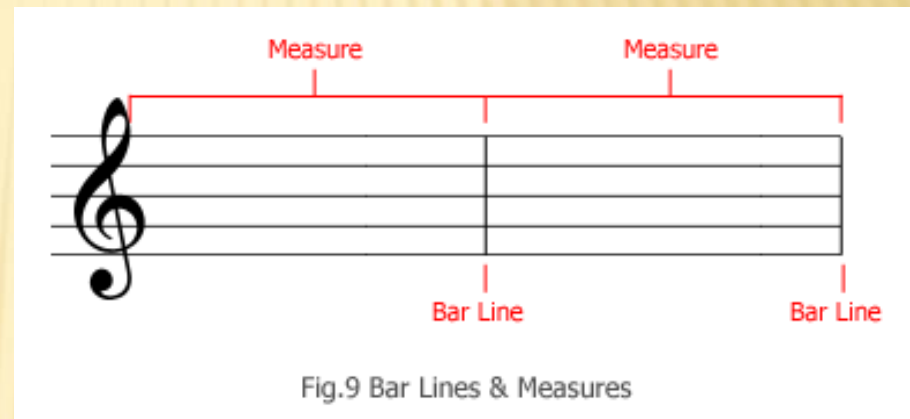
**Andante - Slow**

**Rhythm – beats  
combined with  
parts of beats and  
silence to create  
patterns and  
movement in Music**

- 
- ✘ **staff** – a set of five lines and four spaces that is the foundation upon which musical notes are drawn



- × **measure** - A rhythmic grouping or metrical unit that contains a fixed number of beats; in notated music, it appears as a vertical line through the staff



# CLEF SIGNS

---

- ✘ Clef signs are a musical symbol placed at the beginning of the music staff.
- ✘ The **Clefs** assign individual notes to certain lines or spaces



# TIME SIGNATURE

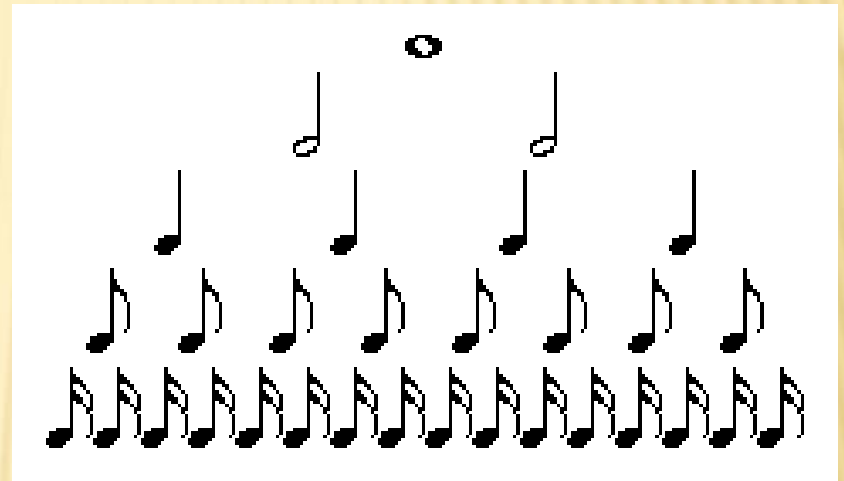
---




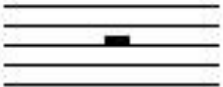



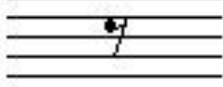

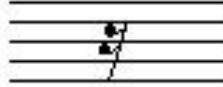
- ✘ time signature - Numbers placed on the left side of the music staff where the top number tells you how many beats per measure and the bottom number tells you that the quarter note receives one beat
  - ✘ **4** – 4 beats in a measure
  - ✘ **4** – quarter note gets one beat
  - ✘ **2** – 2 beats in a measure
  - ✘ **4** - quarter note gets one beat
  - ✘ **3** – 3 beats in a measure
  - ✘ **4** - quarter note gets one beat

# NOTES

---

- ✘ Notes are symbols that tell you how long to play a specific pitch



<b>Name</b>	<b>Note</b>	<b>Rest</b>	<b>Length</b>
Whole Note			4 beats
Half Note			2 beats
Quarter Note			1 beat
Eighth Note			1/2 beat
Sixteenth Note			1/4 beat

# TREBLE CLEF

---

- ✦ The treble Clef is used for the high notes. It is also called the G Clef



# BASS CLEF

---


- ✘ The Bass Clef is used for the low notes. It is also called the F Clef.



# LINES AND SPACES OF THE TREBLE STAFF

✘ Each line and space is assigned a specific pitch.

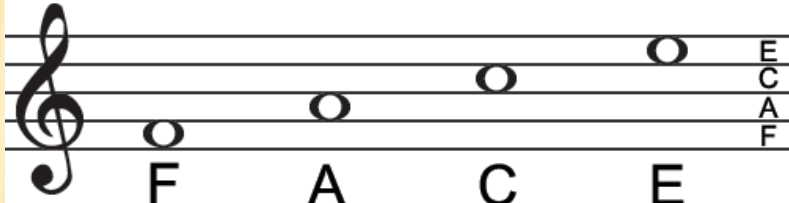
Lines of the Treble Clef



A musical staff with a treble clef. Five quarter notes are placed on the lines of the staff, from bottom to top. Below each note is its corresponding letter name: E, G, B, D, and F.

✘ The Lines are EGBDF

✘ The Spaces are FACE



A musical staff with a treble clef. Four whole notes are placed in the spaces of the staff, from bottom to top. Below each note is its corresponding letter name: F, A, C, and E. To the right of the staff, the letters E, C, A, and F are stacked vertically, corresponding to the lines of the staff.