

HIGH SCHOOL ALL-STATE SCALE REQUIREMENTS

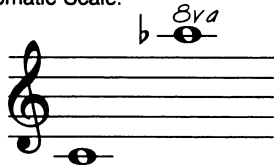
GRADES 9 AND 10

1. Scales must be memorized.
2. All scales shall be played at the auditions.
3. All required scales should be played within the range of each instrument's chromatic scale (shown on the staff with each instrument's major scale requirements).
4. All required scales are stated in the key for that instrument, NOT as concert pitch.
5. All major scales will be either tongued or slurred but not a combination of the two on any single scale. The chromatic scale should be slurred (except trombone legato tongued).
6. All major scales are to be played using the rhythm pattern found below with the arpeggio following immediately after each scale (use same rhythm for one, two or three octave major scales).

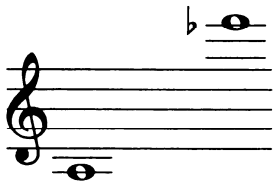
SCALE FORMAT is the same for one, two, or three octave scales.



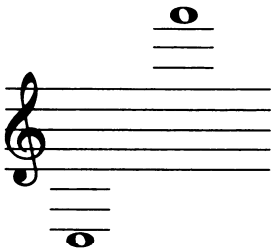
FLUTE: Major Scales: Eb, Ab, Db, F, G, C, two octaves; Bb one octave and Chromatic Scale.



OBOE: 1 octave: Ab, Bb, F, G
2 octaves: C, Db, Eb
Chrom: B to Eb



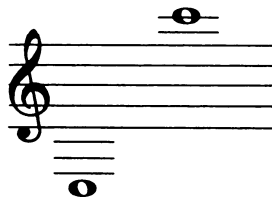
Bb CLARINET: Major Scales: Eb, Bb, C, G, D, A, two octaves; F three octaves; and Chromatic Scale.



Eb ALTO AND Eb CONTRABASS CLARINETS: Major Scales: D one octave; Bb, F, C, G, A, E, two octaves; and Chromatic Scale.



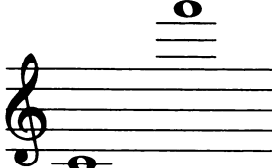
Bb BASS AND CONTRABASS CLARINETS: Major Scales: Eb, D one octave; Bb, F, C, G, A, two octaves; and Chromatic Scale.



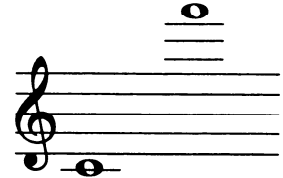
BASSOON: Major Scales: G, Ab, one octave; Eb, Db, F, C, two octaves; Bb 2 octaves; and Chromatic Scale.



ALTO SAXOPHONE: Major Scales: Bb, G, A, one octave; F, C, D, E, two octaves; and Chromatic Scale.



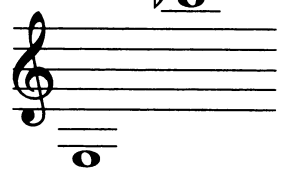
TENOR SAXOPHONE: Major Scales: Bb, G, A, one octave; Eb, F, C, D, two octaves; and Chromatic Scale.



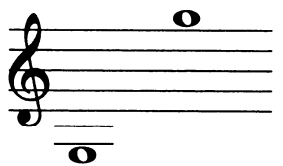
BARITONE SAXOPHONE: Major Scales: E, A, G, F, Bb, one octave; C, D, two octaves; and Chromatic Scale.



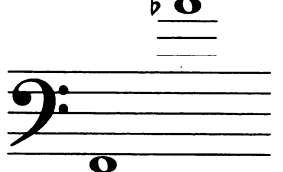
TRUMPET AND BARITONE TREBLE CLEF: Major Scales: C, F, Eb, D, one octave; Bb, G, A, two octaves; and Chromatic Scale.



FRENCH HORN: Major Scales: F, Bb, Eb, Ab, C, D, one octave; G two octaves; and Chromatic Scale.



TROMBONE AND BARITONE BASS CLEF: Major Scales: Db, Eb, Bb, C, one octave; Ab, F, G, two octaves; and Chromatic Scale.



BBb TUBA: Major Scales: Db, Ab, Eb, Bb, C, one octave; F, G, two octaves; and Chromatic Scale.



STRING BASS: Major Scales: Bb, Eb, Ab, Db, C, G, all one octave (pizzicato); and Chromatic Scale, (slurred four to a bow)

