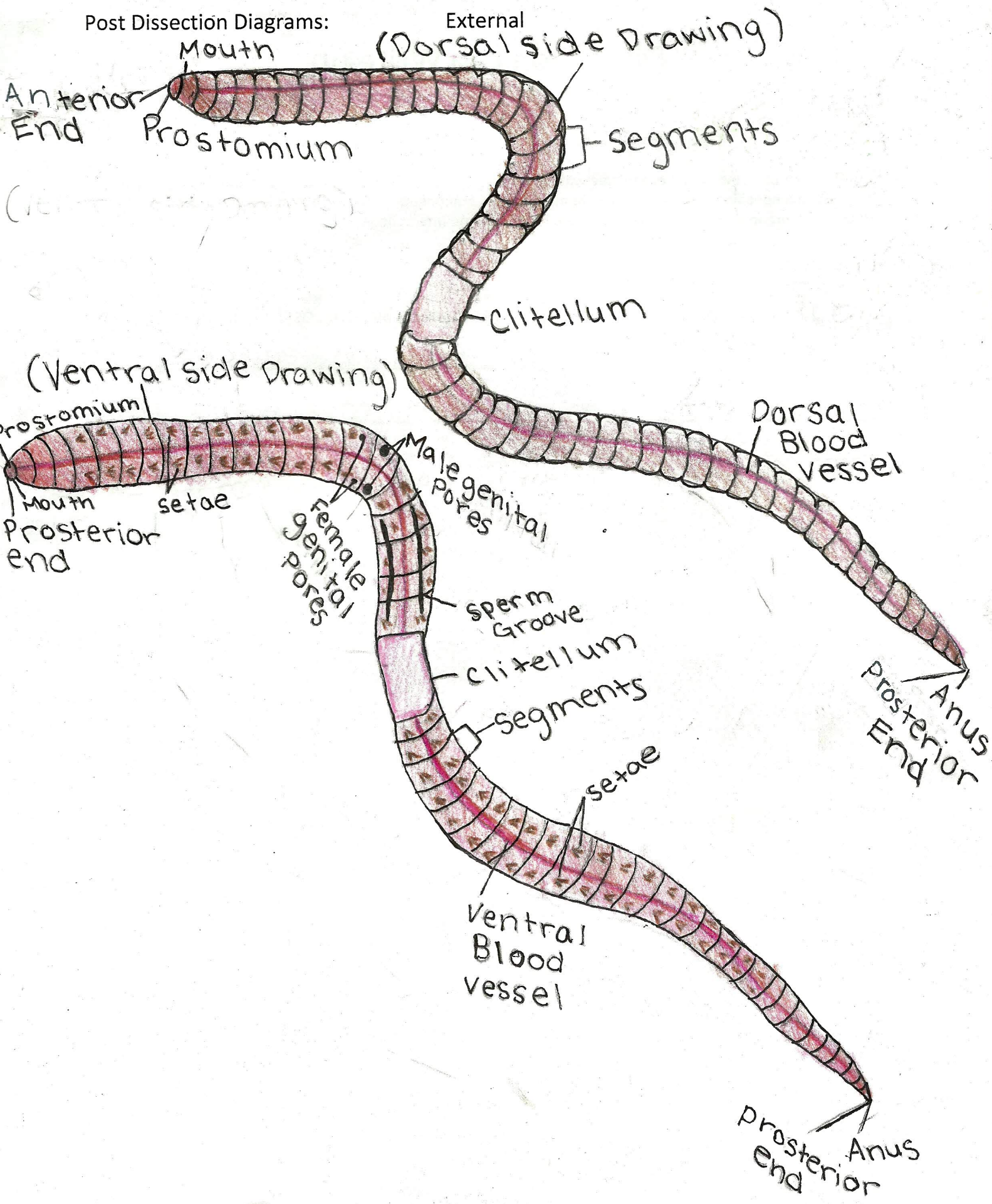


Post Dissection Diagrams:



Anterior End

Mouth
Prostomium

External (Dorsal side Drawing)

segments

Clitellum

(Ventral side Drawing)

Prostomium
Mouth
Prosterior end

setae

Female genital pores

Male genital pores

Sperm Groove

Clitellum

segments

setae

Ventral Blood vessel

Dorsal Blood vessel

Anus
Prosterior End

prosterior end
Anus

Post Dissection Diagrams Internal

