

**Course 1**  
**Quarter 2 - Math Project**  
**Floor Plan**

**Date Assigned:** \_\_\_\_\_

**Due Date:** \_\_\_\_\_

**Objective:** Students will create a floor plan for an apartment that is 1300 square feet in order to determine the area of a composite figure.

**Materials:**

Poster board

Color paper or construction paper

Markers

Math book/Notes

Grid paper

Scissors

Color pencils

Plain white paper

Ruler

Tape, glue or paste

Pencils

**Task**

*1. Create a floor plan*

A) On the white paper complete a rough draft of how you want your apartment to look. The plan must include at least one bedroom, one bathroom, one closet, and kitchen.

B) The shapes below must be incorporated into the floor plan.

a. Rectangles

b. Squares

c. Triangles

d. Parallelograms

C) Be sure that each room of the apartment is labeled with the names of rooms and hallways along with their dimensions.


*2. Transferring information to the poster board*

A) Complete a rough draft on grid paper for teacher approval. Once it is approved, transfer that information to the poster board.

*3. Summary*

A) Write a summary that explains the floor plan of your apartment. The explanation must include the dimensions of each room and hallway represented in the apartment along with the areas of **each** room and **how** they were calculated. Be sure that the total 1300 total square feet is represented in the summary. Also, discuss how decisions were made regarding room placement and square footage of the rooms.

**Quarter 2 – Math Project – *Floor Plan* – 6<sup>th</sup> Grade  
TEACHER PLANNING AND PACING CALENDAR**

<b>Element</b>	<b>Due Dates</b>	<b>Possible Points</b>
Project Introduced	1-12-09	<b>0</b>
Signed Parent Letter	1-15-09	<b>10</b>
Rough Draft of floor plan	1-21-09	<b>10</b>
Mathematical Calculations	1-23-09	<b>10</b>
Floor plan poster board	1-26-09	<b>10</b>
Summary	1-26-09	<b>10</b>
Overall neatness	1-26-09	<b>10</b>
<b>Total</b>		<b>60</b>

**Notes:**

---

---

---

**Quarter 2 – Math Project – *Floor Plan* – 6<sup>th</sup> Grade**  
**STUDENT PLANNING AND PACING SHEET**

**Name:**

Element	Due Dates	Completed (√)
Project introduced	1-12-09	
Signed parent letter	1-15-09	
Rough draft of floor plan	1-21-09	
Mathematical calculations	1-23-09	
Floor plan poster board	1-26-09	
Summary	1-26-09	
Overall neatness	1-26-09	

**Notes:**

---

---

---

---

---

**Quarter 2 – Math Project –Floor Plan – 6<sup>th</sup> Grade  
GRADING SHEET**

	<b>POINTS AND CRITERIA</b>			
	<b>10</b>	<b>8</b>	<b>7</b>	<b>6</b>
<b>Floor Plan</b>	Floor plan contains <b>all</b> required information: bedroom, closet, bathroom, and kitchen. Rooms are labeled appropriately along with the dimensions. All required shapes are included in the plan.	Floor plan contains <b>all</b> of the rooms and shapes. It may be missing some labels.	The floor plan may not include all of the required rooms or shapes. It may be missing some labels.	The floor plan does not include the required shapes, shapes, and labels.
<b>Mathematical Calculations</b>	All individual room areas are calculated correctly. The total area of 1300 square feet is represented.	Most of the room calculations are accurate. The process is correct, but there may be a calculation error.	Some of the room calculations are inaccurate.	Few of the calculations are correct due to incorrect processes (i.e. using incorrect area formulas)
<b>Summary</b>	An explanation of how the area of each room was determined and includes the calculation of the total area of the apartment. It also includes a discussion of the room placement and how the square footage of the rooms was determined.	An explanation of how the area of most rooms was determined and includes the calculation of the total area of the apartment. It also includes a discussion of the room placement and how the square footage of the rooms was determined.	An explanation of how the area of some rooms was determined and includes the calculation of the total area of the apartment. It may or may not includes a discussion of the room placement or how the square footage of the rooms was determined.	An explanation of how the area of few rooms was determined may not include the calculation of the total area of the apartment. It does not include a discussion of the room placement or how the square footage of the rooms was determined.
<b>Overall Neatness</b>	Project is neat.	Project has one to two areas that are sloppy.	Project has three to four areas that are sloppy.	Project is unorganized and sloppy.

*Quarter 2 - Math Project – Floor Plan – 6<sup>TH</sup> Grade*

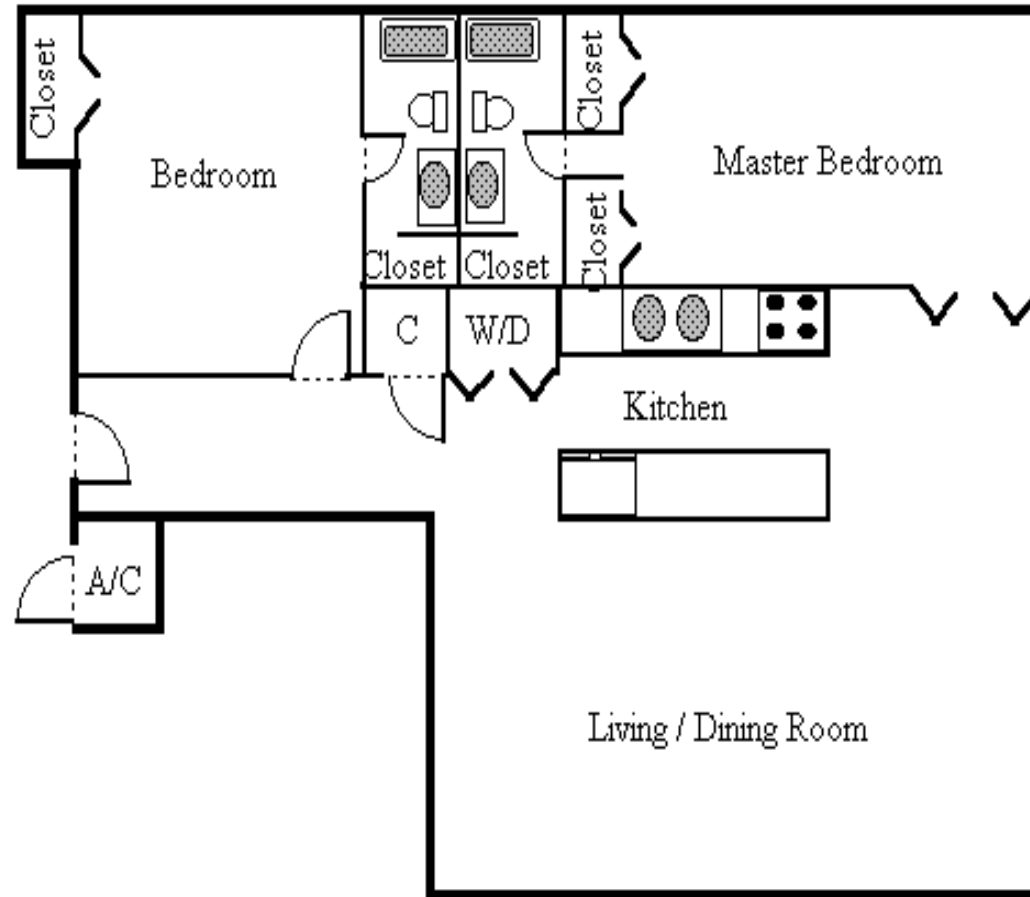
Name: \_\_\_\_\_

Score: \_\_\_\_\_

	POINTS AND CRITERIA				Points
	10	8	7	6	
<b>Parent Letter</b>	Parent Letter was signed and returned.	<del>Parent Letter was signed and returned.</del>	<del>Parent Letter was signed and returned.</del>	Parent Letter was NOT returned.	
<b>Rough draft</b>	Rough draft was submitted for teacher approval.	<del>Rough draft was submitted for teacher approval.</del>	<del>Rough draft was submitted for teacher approval.</del>	Rough draft was NOT submitted for approval.	
<b>Floor plan</b>	Floor plan contains <b>all</b> required information: bedroom, closet, bathroom, and kitchen. Rooms are labeled appropriately along with the dimensions. All required shapes are included in the plan.	Floor plan contains <b>all</b> of the rooms and shapes. It may be missing some labels.	The floor plan may not include all of the required rooms or shapes. It may be missing some labels.	The floor plan does not include the required shapes, shapes, and labels.	
<b>Mathematical calculations</b>	All individual room areas are calculated correctly. The total area of 1300 square feet is represented.	Most of the room calculations are accurate. The process is correct, but there may be a calculation error.	Some of the room calculations are inaccurate.	Few of the calculations are correct due to incorrect processes (i.e., using incorrect area formulas).	
<b>Summary</b>	An explanation of how the area of each room was determined and includes the calculation of the total area of the apartment. It also includes a discussion of the room placement and how the square footage of the rooms was determined.	An explanation of how the area of most rooms was determined and includes the calculation of the total area of the apartment. It also includes a discussion of the room placement and how the square footage of the rooms was determined.	An explanation of how the area of some rooms was determined and includes the calculation of the total area of the apartment. It may or may not includes a discussion of the room placement or how the square footage of the rooms was determined.	An explanation of how the area of few rooms was determined may not include the calculation of the total area of the apartment. It does not include a discussion of the room placement or how the square footage of the rooms was determined.	
<b>Overall Neatness</b>	Project is neat.	Project has 1-2 areas that are sloppy.	Project has 3-4 areas that are sloppy.	Project is unorganized and sloppy.	
<b>TOTAL</b>					60
Percent Score					
<b>TOTAL SCORE</b>					

Quarter 2 - Math Project – Floor Plan – 6<sup>TH</sup> Grade

SAMPLE FLOOR PLAN



Source:

<http://www.themajestic.com/floorpln.htm>