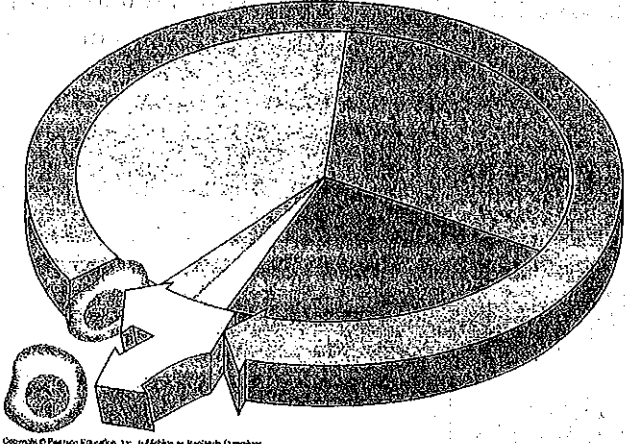
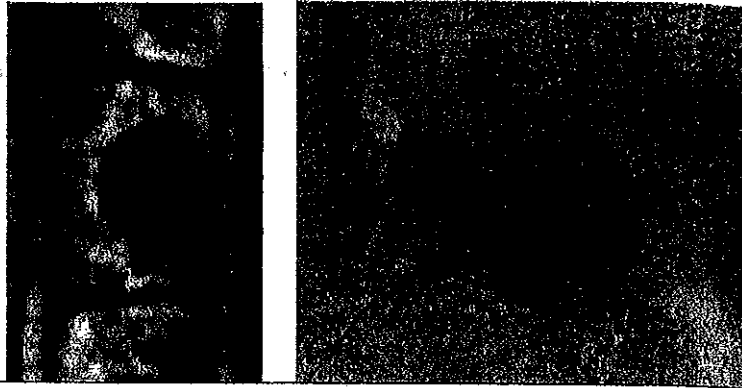
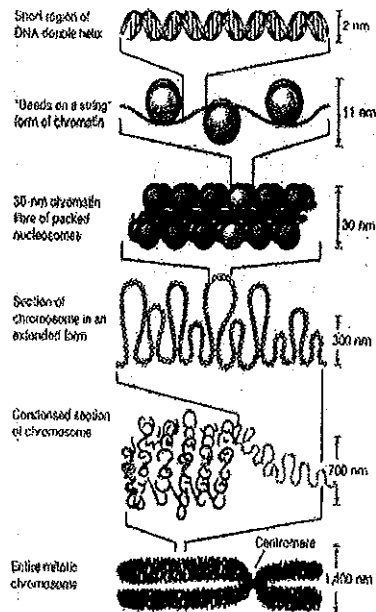


	Topic: Cell Cycle and Mitosis
Why do cells divide?	<ol style="list-style-type: none"> 1. 2. 3. 4.
Label the cell cycle	
What is the cell cycle?	
Mitosis can further be broken down into what stages?	<ol style="list-style-type: none"> 1. 2. 3. 4. 5.
Interphase	<p>_____ stage of cell division (90% of cell cycle)</p> <p>_____ is visible</p> <p>3 sub-phases:</p> <p>G1: _____</p> <p>S: DNA is copied (DNA _____)</p> <p>G2: _____ copied/duplicated to prepare for division</p>

How do you know if these cells are in interphase?



How is DNA packaged into Chromosomes?



DNA coils around set of 4 _____ proteins, creating a "bead on a string" called a _____

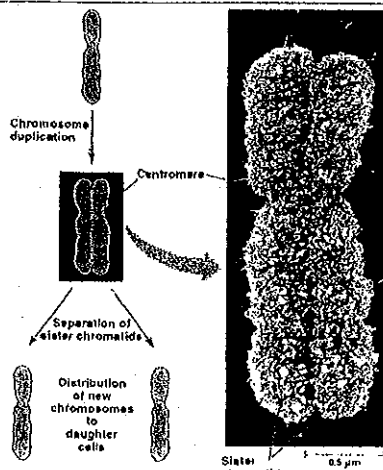
The nucleosome coils into structures called _____

Chromatin supercoils = _____!

How many chromosomes do humans have?

Human _____ (body cells) have 46 chromosomes

Human _____ (sperm or eggs) have 23 chromosomes



The chromosome is duplicated (during _____)

Each duplicated chromosome consists of two _____

These are connected by a _____

M Phase

The M Phase consists of:

- _____ and _____

Mitosis: the division of the _____

Cytokinesis: the division of the _____

Four Stages of Mitosis:

- P _____
- M _____
- A _____
- T _____